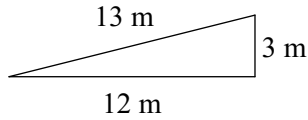


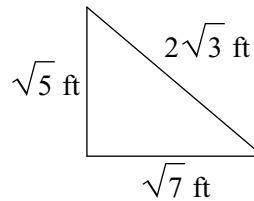
Review WS for PC #2 (9.1 - 9.3)

State if each triangle is acute, obtuse, or right. Show your work to explain your reasoning.

1)

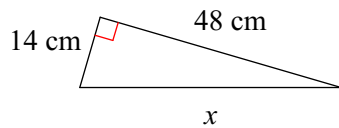


2)

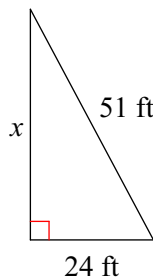


Find the missing side of each triangle. What pythagorean triplet family does this belong to?

3)



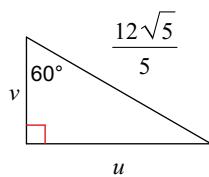
4)



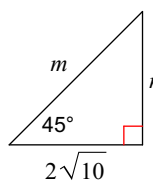
5) UPS trucks are out making deliveries. Two drivers met for lunch and are going back out on their deliveries. One driver goes 4 miles north and the other drives 8 miles east. What is the direct distance between the two drivers?

Find the missing side lengths. Leave your answers as radicals in simplest form.

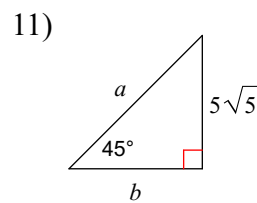
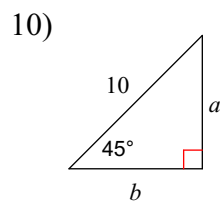
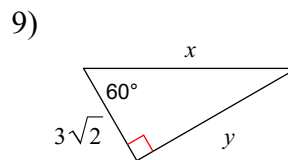
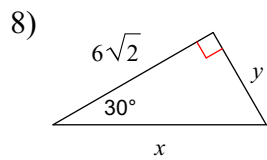
6)



7)



Find the area and perimeter of the triangle. Leave your answers in simplest radical form.



Find the missing length indicated. Leave your answer in simplest radical form.

