

Name:

Date:

Hour:

Algebra 1
WS 8.1B Characteristics of Quadratics

Determine if each function is linear, quadratic or neither. Explain.

1.

x	$g(x)$
-2	17
-1	5
0	1
1	5
2	17

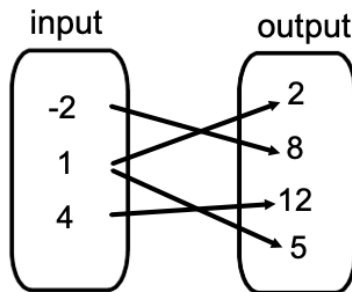
2.

x	$f(x)$
-4	-6
-2	0
0	2
2	0
4	6

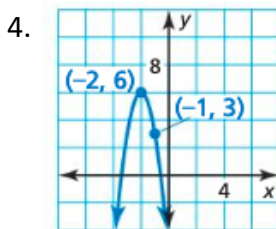
3.

x	y
-3	8
-1	3
1	-2
3	-7
5	-12

4. Determine if the relation is a function.

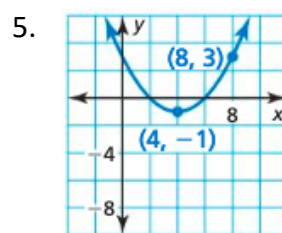


Determine the domain and range of each function.



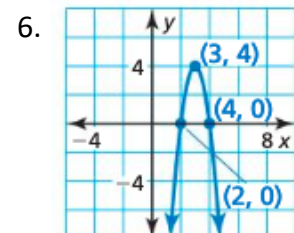
Domain:

Range:



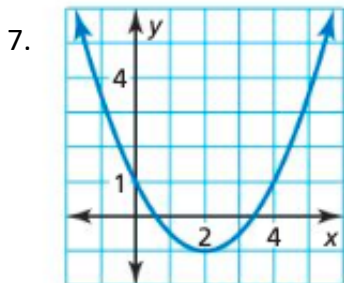
Domain:

Range:



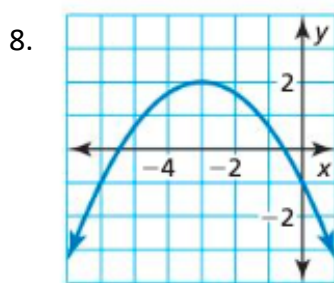
Domain:

Range:



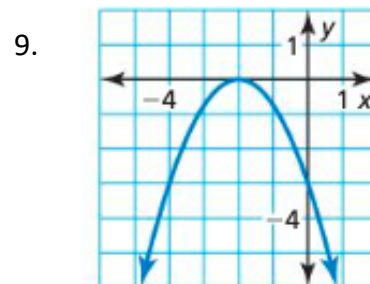
Domain:

Range:



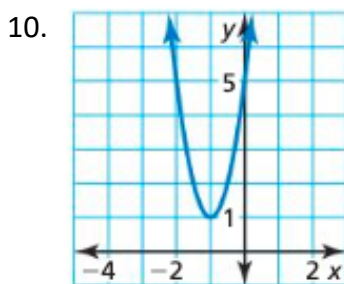
Domain:

Range:



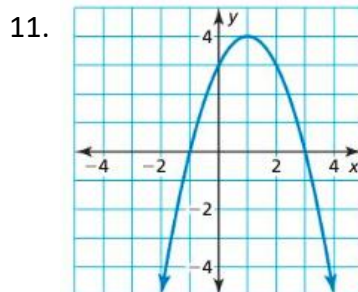
Domain:

Range:



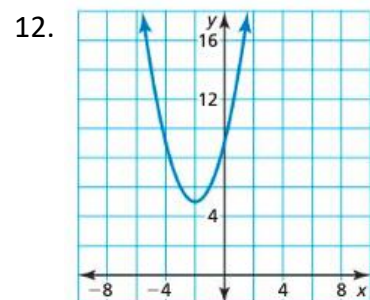
Domain:

Range:



Domain:

Range:



Domain:

Range:

Using your graphing calculator, write the equation of each quadratic function.

13. $\{(0, 5), (1, 0), (2, -3), (3, -4), (4, -3), (5, 0), (6, 5)\}$

14.

x	-6	-5	-4	-3	-2	-1	0
y	-1	4	7	8	7	4	-1

15.

x	-8	-6	-4	-2	0	2
y	5	8	11	14	17	20